

YEAR 2013

COVERAGE (B) STATION 2401

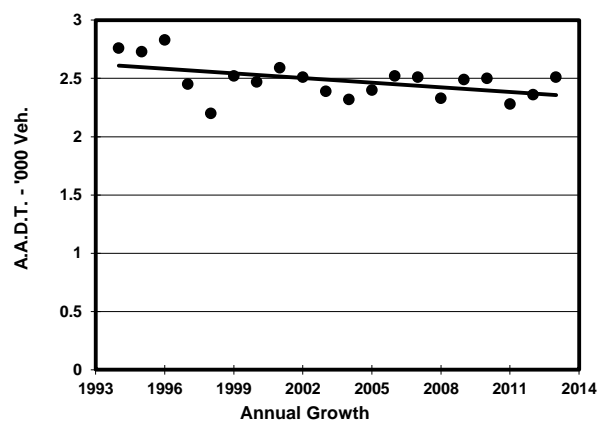
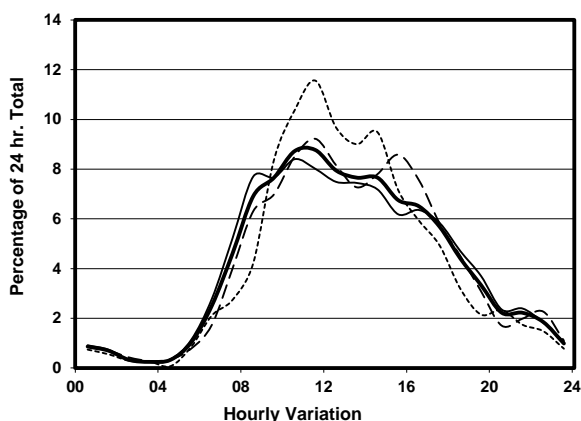
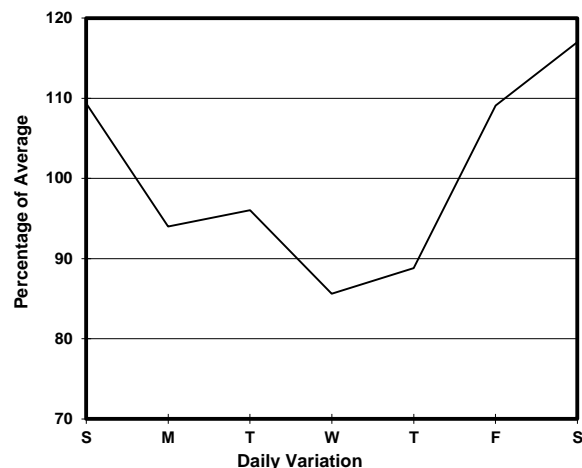
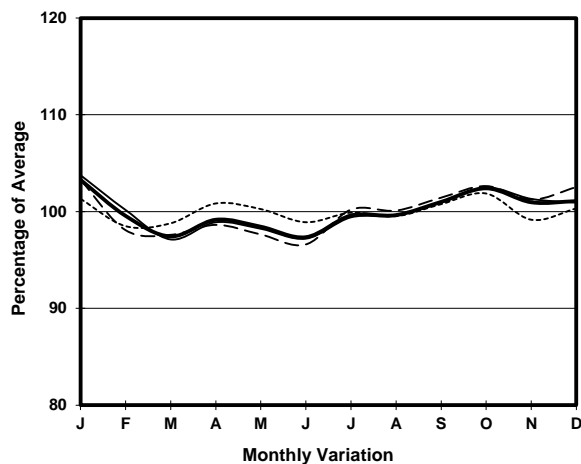
ROAD NETWORK MINOR

ROAD TYPE LOCAL DISTRIBUTOR

LINK LIN SHING RD (from WAN TSUI RD to CAPE COLLISION RD)



1. TRAFFIC FLOW VARIATION AND GROWTH



— All day - - - - - Mon.- Fri. Sat. - . - . - Sun.

2. TRAFFIC CHARACTERISTICS (BY DIRECTION)

Parameter	All - Day	Mon. - Fri.	Sat.	Sun.
SOUTH BOUND				
A.A.D.T.	1970	1890	2230	2010
R 12 / 24 - %	81.5	80.9	82.2	84
R 16 / 24 - %	91.9	91.6	92.4	93.2
AM Peak Hour	0900-1000	0800-0900	0900-1000	0900-1000
One-way flow at AM peak hour	160	150	160	170
T - % (AM)	-	3.6	-	-
PM Peak Hour	1600-1700	1600-1700	1600-1700	1600-1700
One-way flow at PM peak hour	120	120	160	110
T - % (PM)	-	3.1	-	-
Prop.of commercial vehicles - 16 hr.	-	8.3	-	-
NORTH BOUND				
A.A.D.T.	540	470	690	720
R 12 / 24 - %	89.7	87.4	92.9	93.8
R 16 / 24 - %	96.6	96.1	98.2	97.5
AM Peak Hour	0900-1000	0900-1000	0900-1000	0900-1000
One-way flow at AM peak hour	40	30	50	60
T - % (AM)	-	33.3	-	-
PM Peak Hour	1600-1700	1700-1800	1600-1700	1600-1700
One-way flow at PM peak hour	40	40	60	50
T - % (PM)	-	-	-	-
Prop.of commercial vehicles - 16 hr.	-	2.5	-	-

3. OTHER INFORMATION AND COMMENT

4. Vehicle classification and occupancy - Monday to Friday

Time		Class of vehicle									
		Motor Cycle	Private Car	Taxi	Private LB	PLB	Goods veh.		Non Fr. Bus	Fr. Bus	
							Light	M & H		SD	DD
0700-0800	Pro	5.9	14.7	17.6	2.9	11.8	29.4	8.8	8.8	0.0	0.0
	Ocp	1.0	2.4	1.8	10.0	15.0	1.8	1.3	13.0	0.0	0.0
0800-0900	Pro	0.0	54.5	12.1	3.0	15.2	12.1	0.0	3.0	0.0	0.0
	Ocp	0.0	1.7	1.8	6.0	13.8	1.8	0.0	4.0	0.0	0.0
0900-1000	Pro	2.5	20.0	20.0	5.0	12.5	22.5	12.5	5.0	0.0	0.0
	Ocp	1.0	1.6	4.1	4.5	15.8	1.9	1.4	4.0	0.0	0.0
1000-1100 Peak hour	Pro	3.8	23.1	17.3	5.8	9.6	32.7	7.7	0.0	0.0	0.0
	Ocp	1.0	1.6	1.9	3.7	15.8	1.5	1.0	0.0	0.0	0.0
1100-1200	Pro	0.0	32.4	32.4	5.4	5.4	21.6	0.0	2.7	0.0	0.0
	Ocp	0.0	1.4	2.7	3.5	11.5	1.9	0.0	1.0	0.0	0.0
1200-1300	Pro	4.3	29.8	29.8	0.0	4.3	25.5	2.1	4.3	0.0	0.0
	Ocp	1.0	1.8	1.9	0.0	15.0	1.6	1.0	3.5	0.0	0.0
1300-1400	Pro	6.5	29.0	35.5	3.2	3.2	19.4	0.0	3.2	0.0	0.0
	Ocp	1.5	2.2	2.7	1.5	14.5	2.3	0.0	5.0	0.0	0.0
1400-1500	Pro	1.9	44.2	25.0	0.0	5.8	15.4	5.8	1.9	0.0	0.0
	Ocp	1.0	1.8	2.5	0.0	13.3	1.3	1.0	2.0	0.0	0.0
1500-1600	Pro	0.0	24.3	27.0	0.0	8.1	27.0	8.1	5.4	0.0	0.0
	Ocp	0.0	1.2	1.9	0.0	5.0	1.8	1.0	7.0	0.0	0.0
1600-1700	Pro	5.3	39.5	23.7	0.0	10.5	18.4	0.0	2.6	0.0	0.0
	Ocp	1.0	1.5	1.7	0.0	2.8	1.7	0.0	1.0	0.0	0.0
1700-1800	Pro	10.3	37.9	6.9	0.0	13.8	27.6	0.0	3.4	0.0	0.0
	Ocp	1.3	2.1	1.5	0.0	7.8	2.3	0.0	8.0	0.0	0.0
1800-1900	Pro	5.4	59.5	2.7	0.0	13.5	13.5	0.0	5.4	0.0	0.0
	Ocp	1.0	1.5	3.0	0.0	12.8	1.0	0.0	1.0	0.0	0.0
1900-2000	Pro	8.3	58.3	4.2	0.0	12.5	12.5	0.0	4.2	0.0	0.0
	Ocp	1.5	1.6	1.0	0.0	13.0	1.3	0.0	1.0	0.0	0.0
2000-2100	Pro	4.8	33.3	14.3	0.0	9.5	28.6	0.0	9.5	0.0	0.0
	Ocp	2.0	1.6	2.0	0.0	11.5	1.7	0.0	3.0	0.0	0.0
2100-2200	Pro	0.0	50.0	28.6	0.0	14.3	7.1	0.0	0.0	0.0	0.0
	Ocp	0.0	2.6	2.0	0.0	7.5	1.0	0.0	0.0	0.0	0.0
2200-2300	Pro	12.5	37.5	12.5	0.0	25.0	12.5	0.0	0.0	0.0	0.0
	Ocp	1.0	2.7	1.0	0.0	12.5	1.0	0.0	0.0	0.0	0.0
16 hours	Pro	4.1	35.0	21.1	1.9	9.4	21.4	3.4	3.7	0.0	0.0
	Ocp	1.2	1.7	2.3	4.2	11.9	1.7	1.2	4.9	0.0	0.0

Legend

Pro. Proportion of vehicles in % (Sum may not add up to 100% due to figure rounding)
Ocp. Average occupancy of vehicles
M&H Medium and Heavy